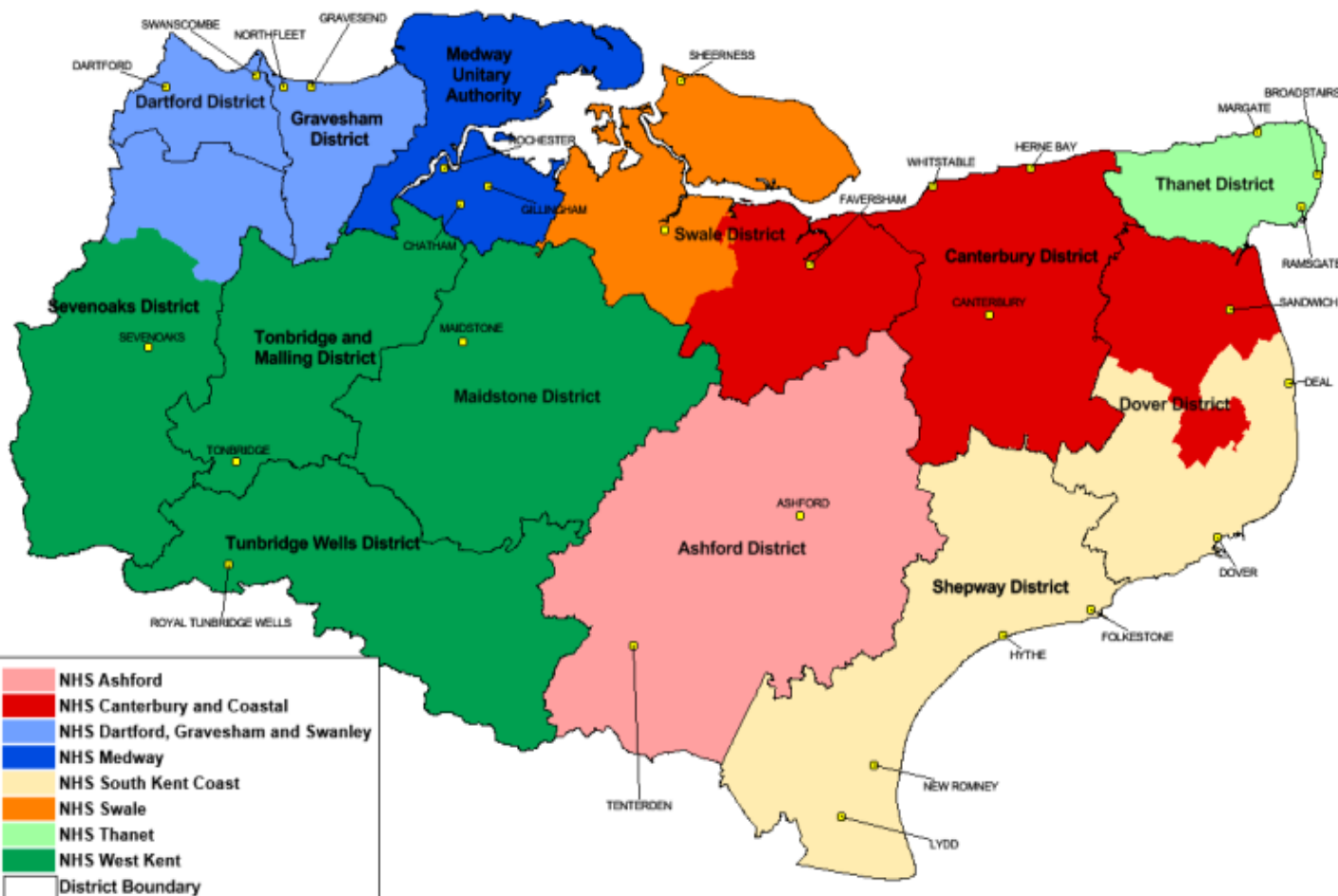




Porchlight Presentation to
Mental Health Action Groups
Thanet & South Kent Coast CCGs

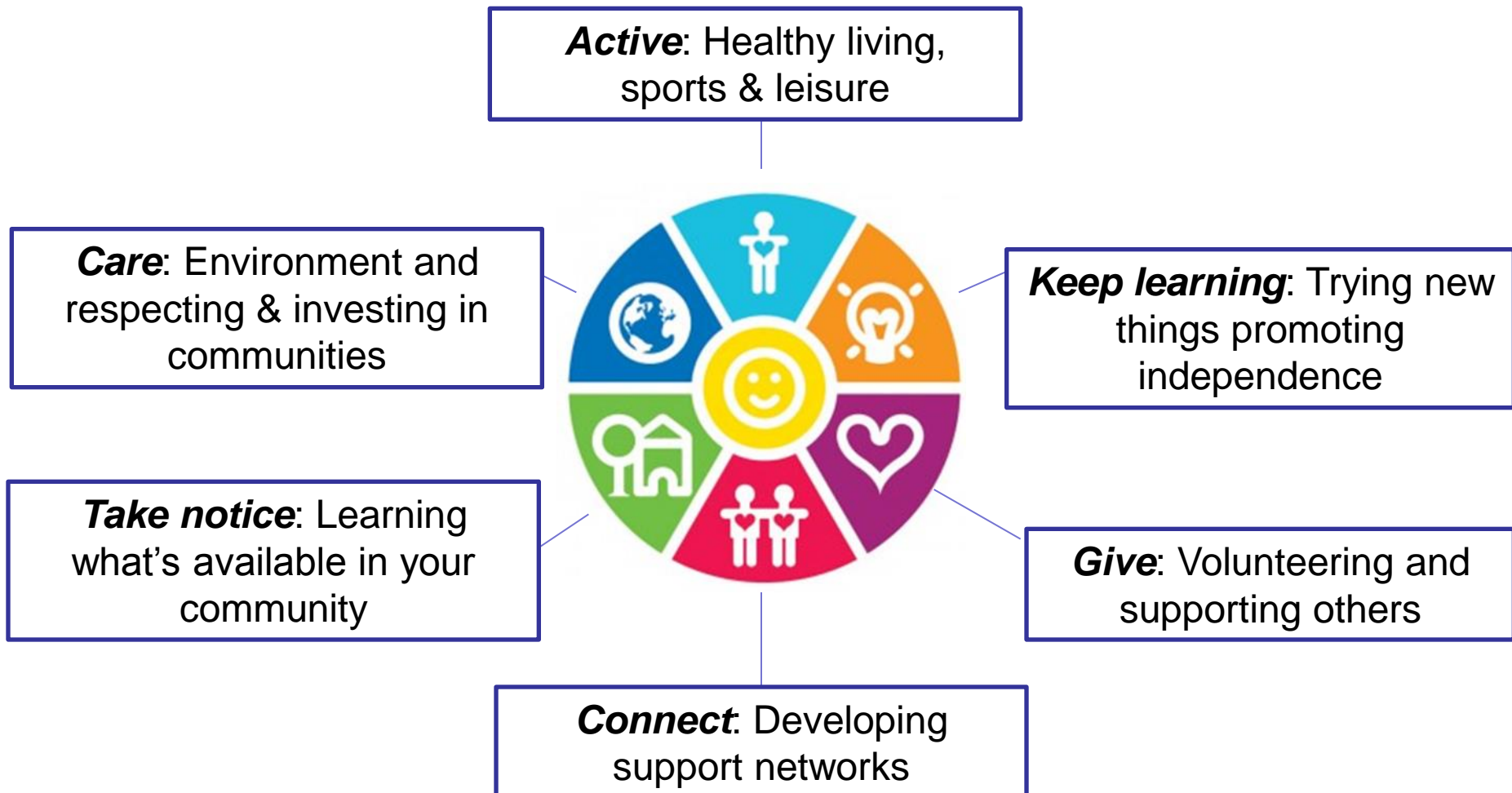


Boundaries for Clinical Commissioning Groups and Local Authorities across Kent & Medway



Help improve mental health and wellbeing

- Personalised support
- Momentum, recovery, forward direction of travel
- Connect people to their communities
- Wide range of opportunities
- Smooth pathways
- Joined up working between services
- Improved transitions
- Outcome focused
- Robust performance measures



Why Porchlight?

- Primary Care Community Link Worker Service
- Adolescent Support Service
- Family Support Service
- Community Inclusion Service
- Jobs, Education & Training Service
- Rough Sleeper Service
- Homelessness Prevention Service
- Private Rented Sector Team
- Young Adults & Adults Supported Accommodation

Contracted Delivery Partners in Lot 4

- Richmond Fellowship (Thanet)
- Rethink Employment Service (Thanet)
- Groundwork (Thanet)
- Mcch Dover & Deal (SKC)
- Mcch Aspirations Employment Service (SKC)
- Shaw Trust Employment Service (SKC)
- Folkestone & District Mind (SKC)
- Take Off (Thanet & SKC)

Small grants

- Deal Pathfinders Club
- Garden Gate Project
- Carers Support Canterbury, Dover & Thanet
- Creative Foundation, Quarterdeck
- Dover Museums & Arts Group
- Turner Contemporary
- Walk Tall

Porchlight Services

Kent Wide

- Primary Care Community Link Service
- Central Referral Team

DGS, Swale, Thanet & SKC

- Community Inclusion Service
- Mental Health Housing Service (new)

Thanet

- Thanet Health Inclusion

Funding decisions

- Stability & change
- Services across each area
- Increased peer support & housing support
- Community settings
- Costly to Porchlight – we believe in this service
- Not looking to make a profit
- Reinvest in services
- Innovation grant

Wider Network includes

Charlton Athletic Community Trust
Dover Big Local
Ethnic Minority Independent Council
Karibu Community Action Kent
Kent Arts & Culture Service
Kent Fire & Rescue Service
Kent Library Service
Live Heritage CIC
Pipeline Youth Initiative
Sanctuary Housing
Turning Point
Vocational Advisors KMPT

Dover Arts Development Limited
DWP Work Services Directorate
Hodge, Jones & Allen Solicitors
Kent Adult Education
Kent Creative Arts
Kent Health Trainers KCHT
Kent Sport & Physical Activity Service
Pie Factory Music
Primary Care Social Care Workforce
Sidney de Haan Singing for Health
IAPT providers

Network events

Network growth

Mapping exercise



How are referrals made?

- No wrong door
- Direct to services
- Call 0800 567 7699 Central Referral Team
- Email info@livewellkent.org.uk
- Direct referrals between services

What happens then?

Within a week

- Wellbeing scale
- Wellbeing plan
- Personalised aims & objectives
- Services offered
- Refer on directly if unable to provide service

Call backs – how are things going?

6 month follow up

Service User Involvement

- 4 service user mobilisation steering group meetings
- Changes made eg: helpline, computer group
- Steering group meeting in May (bi-monthly)
 - Service users
 - Senior managers of delivery partners
 - Decision making group
- Service user feedback events
- Mystery shopping

How to raise issues / ideas / ways to improve the service

- In MHAGs or service user forums
- Contact directly
hilaryjohnston@porchlight.org.uk
- Or via info@livewellkent.org.uk

Porchlight are looking to

- Listen
- Respond
- Work in partnership
- Value other organisations
- Make Living Well in Kent a reality

Thank you

Any questions